

Transition Plate

Performance and Application

Made of aluminum-silicon (Al-Si) and N17 materials, it is used with products such as thimbles, distribution plates, graphite rings and launders in molten metal casting equipment, especially in conjunction with the wagstaff air-slide casting table for precision casting.

During casting, the aluminum liquid from the distribution plate is directed to the mold crystallizer for forming. It features strong corrosion resistance, high geometric precision, smooth casting surface, long service life, low maintenance cost, and no pollution to the molten metal.

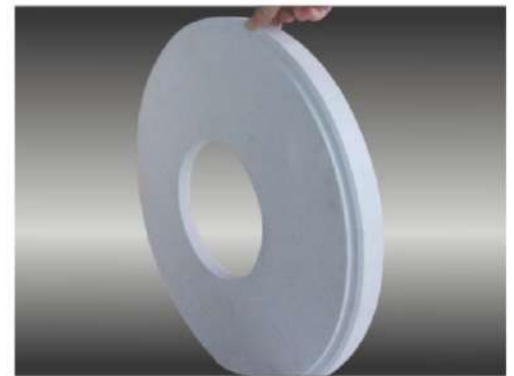
Custom Specifications (determined by the diameter of the alloy)

3in	3.5in	4.5in	5in	5.5in	6in	6.5in	7in
8in	9in	10in	12in	14in	16in	18in	20in

CNC Machining Site



Transition Plate



Transition Plate

Effect Comparison of Transition Plate Before and After 550 Castings

